



EFEKTOR RV3604 REVERB





EFEKTOR RV3604 REVERB

THANK YOU FOR CHOOSING KUASSA PRODUCTS!

We encourage you to take the time to read this User Manual thoroughly to ensure trouble free and proper operation of the software.

The most commonly used effect. Found on small practice amps to big touring amps. Also on stompbox pedals to large studio rack units. It's usage is somewhat tricky, but it could be the fine border of a professional recording and a beginner's work. Reverb is a powerful tool to add depth, distance, and also to build emotion to the listener. It gives ambience, creates space, and produces a sense of three dimensional to the original sound.

Taken the algorithms from the sounds of natural spaces to artificially created electrical and mechanical devices, Kuassa Efektor RV3604 Reverb provides five types of Reverb to enhance your recordings.



KEY FEATURES:

- 5 popular reverb types:
 - Room: Tight and fat roomy sound.
 - Hall: Big and wide concert space.
 - Plate: Simulated vibrating metal plate. Grainy and unique because the low frequency propagates slower than the high freq.
 - Spring: Simulating mechanical springs commonly found on guitar amps.
 - Shimmer: Haunting and atmospheric, created by pitch shifting the reverb tails.
- Simplified controls for easier and faster work.
- Separate Wet and Dry controls.
- Photorealistic graphics for lifelike guitar playing experience.
- Straightforward and easy to use interface.
- CV Inputs for Automation (Rack Extension only)

SYSTEM REQUIREMENTS

Windows:

Windows Vista or Later (32/64 bit)

Intel Pentium 4, or AMD Athlon XP or better (Core2 Duo, Athlon64, or better is recommended) with 512MB minimum RAM

VST/VST3/AAX/RE compatible host/sequencer or Propellerhead Reason 7.1 or later.

Macintosh:

Mac OSX 10.6.8 or later (32/64 bit)

Intel Pentium 4, or AMD Athlon XP or better (Core2 Duo or Athlon64 recommended) with 512MB minimum RAM

VST/VST3/AU/AAX/RE compatible host/sequencer, Protools 10 or later or RE Propellerhead Reason 7.1 or later.

Installation

MAC OSX 10.6.8 OR LATER

Note for MacOS X users: you must be logged in to a user account with administration privileges to run the installer.

For Mac installer(.pkg) format, double-click the installer and follow the instructions. The installer automatically point to your Mac's default VST/VST3/AU/AAX plug-ins path (see below). Alternatively you can customize the installation target to specific folder.

Here is the list of default folder installation path for each of our supported platforms in Mac OSX:

- | | |
|--|---|
| • Mac Audio Unit (EfektorRV3604.component) | : Library/Audio/Plug-Ins/Components |
| • Mac VST (EfektorRV3604.vst) | : Library/Audio/Plug-Ins/VST/Kuassa |
| • Mac VST3 (EfektorRV3604.vst3) | : Library/Audio/Plug-Ins/VST3 |
| • Mac AAX (EfektorRV3604.aaxplugin) | : Library/Application Support/Avid/Audio/Plug-Ins |

WINDOWS VISTA OR LATER

Note for Windows Vista, 7, or later: We recommend installation with Administrator rights using "Run as Administrator" for both Kuassa Installer and Sequencer/Host installer.

For Windows Installer (.exe), double-click the installer and follow the instructions. The installer automatically point to your system's default plugins path (see below). Alternatively you can point the installation target to specific folder. Most VST host already have a "Plugins" or "VSTplugins" folder inside its installation directory, or you can point the host to read any folder you choose.

Here is the list of default folder installation path for each of our supported platforms:

- | | |
|--|---|
| • Windows 32-bit VST (EfektorRV3604.dll) | : C:\Program Files\Steinberg (x86)\VstPlugins\Kuassa |
| • Windows 64-bit VST (EfektorRV3604.dll) | : C:\Program Files\Steinberg\VstPlugins\Kuassa |
| • Windows 32-bit VST3 (EfektorRV3604.vst3) | : C:\Program Files (x86)\Common Files\VST3 |
| • Windows 64-bit VST3 (EfektorRV3604.vst3) | : C:\Program Files\Common Files\VST3 |
| • Windows 32-bit AAX (EfektorRV3604.aaxplugin) | : C:\Program Files (x86)\Common Files\Avid\Audio\Plug-Ins |
| • Windows 64-bit AAX (EfektorRV3604.aaxplugin) | : C:\Program Files\Common Files\Avid\Audio\Plug-Ins |

Uninstallation

MAC OSX 10.6.8 OR LATER

To uninstall from OS X, simply delete the plug-in located on the Plug-ins folder, and delete other file resources located at:
/Users/[YourName]/Music/Audio Music Apps/Kuassa/*/*

WINDOWS VISTA OR LATER

Use “Add/Remove programs” or “Programs and Features” from the Windows Control Panel. If EFEKTOR Plug-in(s) does not listed, delete the .dll file from your VST plug-in folder. And other EFEKTOR file resources at ~\Documents\Kuassa**

Authorization



- 1 On evaluation mode, you will see this pop-up window when you first start the plugin.

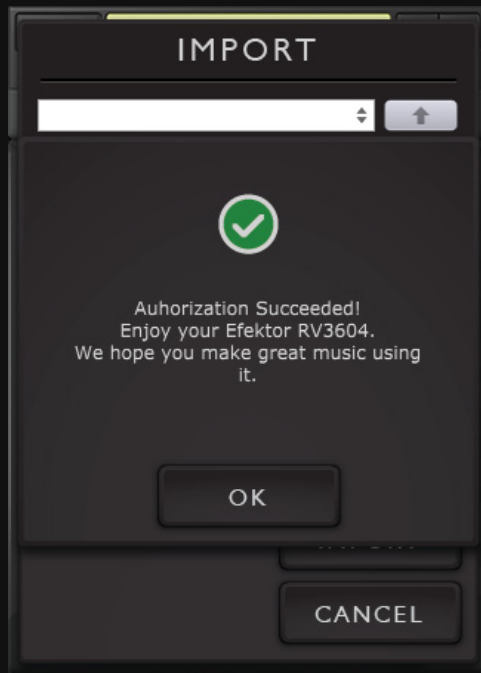


- 2 To start the authorization process, click the [File] button on the top-left of the plug-in's interface, there, you will find a selection box titled [import License].

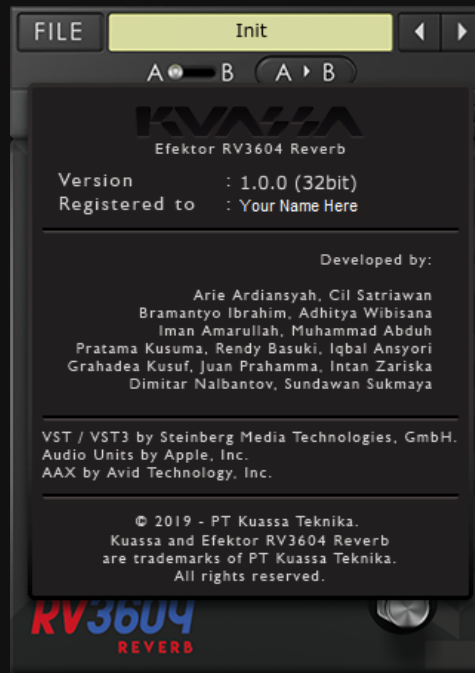


- 3 Locate the License File [EfektorRV3604.kuassa] obtained from the confirmation e-mail sent to you after you purchase EFEKTOR Plug-in(s) from our web store or downloaded from member area. Note that the License File contains your personal information used to authorize the plug-in.

Authorization (Cont'd)



- 4 After you locate the License File, a pop-up box confirming that you are successfully authorize your plug-in will show.



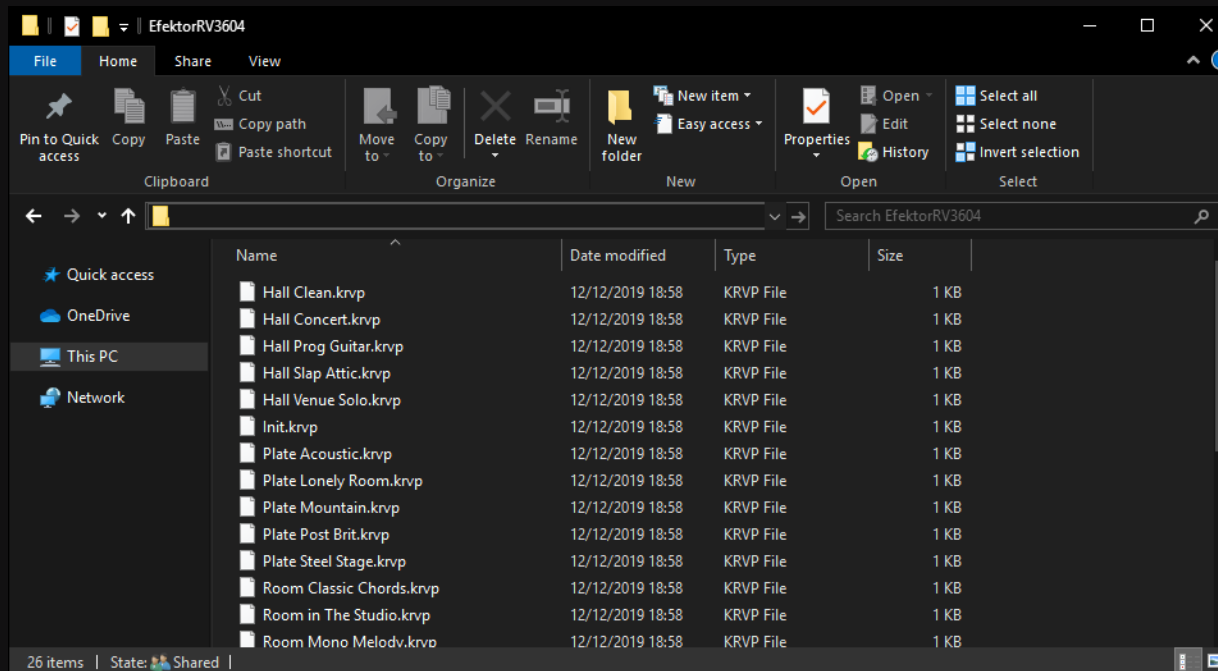
- 5 To check if you have completed the authorization process, just simply load the About Box by clicking the Efektor logo on the bottom left corner. If your authorization is successful, either your name or your e-mail address will be shown on the About Box. You will also notice that the generated noise/silence on the Evaluation Version is now gone.

Function



- 1 [FILE] BUTTON: The Menu button contains several functions; preset saving, and shortcuts to the user manual and Kuassa website.
- 2 PRESET SELECTOR: Select from available Presets, press left-right buttons or select from drop down menu.
- 3 A-B COMPARE: Compares two different settings of the effect.
- 4 COPY A to B: Copies settings from the "A" state to the "B" state or vice versa.
- 5 STEREO: switch between mono and stereo operation.
- 6 REVERB: Sets the amount and length of the reverb effect.
- 7 TONE: Adjust the tone for the reverb from dark to bright.
- 8 WET LEVEL: Controls the level of reverberated signal.
- 9 DRY LEVEL: Control the level of original signal.
- 10 TYPE SELECTOR: Select from five types of reverb, each comes with different tonal characteristics.
- 11 EFEKTOR LOGO: Click to show the About Box.
- 12 BYPASS: Turns the effect unit completely On or Bypass.

Preset Management



1 Presets for EFEKTOR Plug-in(s) are located in the following folders*:

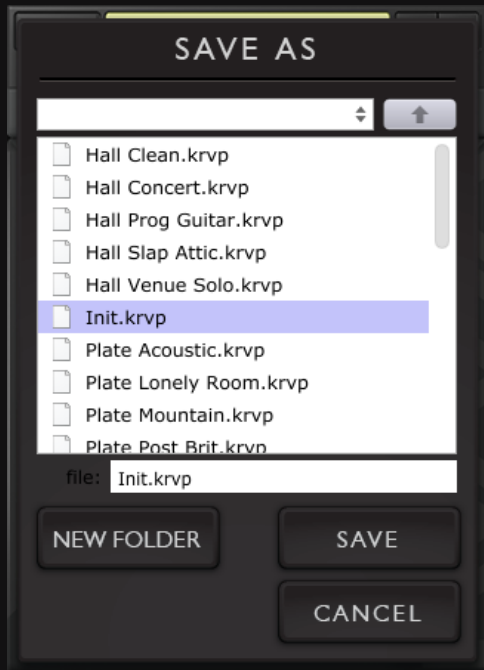
- Mac: Users/[YourName]/Music/Audio Music Apps/Kuassa/Presets/EfektorRV3604
- Win: ~\Documents\Kuassa\Presets\EfektorRV3604

All presets inside these folders will be recognized by the plugin as individual presets, you can also create a folder to group the preset(s). They will thus be shown on the EFEKTOR Plug-in's preset selector.

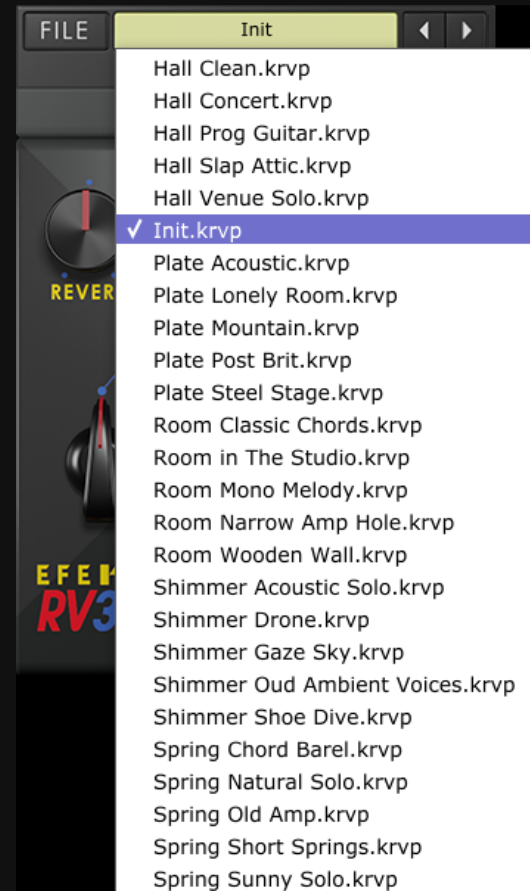
2 To save a preset, set your plugin to the desired parameter settings, then select:

- "Save Preset": Overwrites currently active preset.
- "Save Preset As": Saves current settings into a new preset file (*.krvp for RV3604).

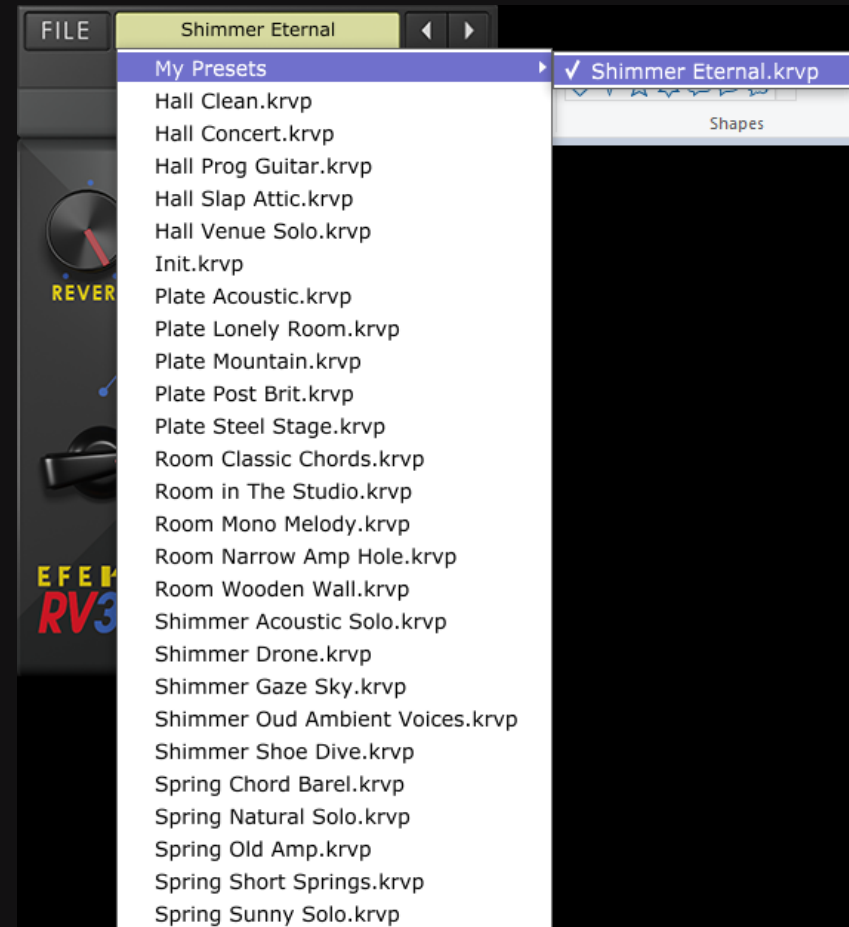
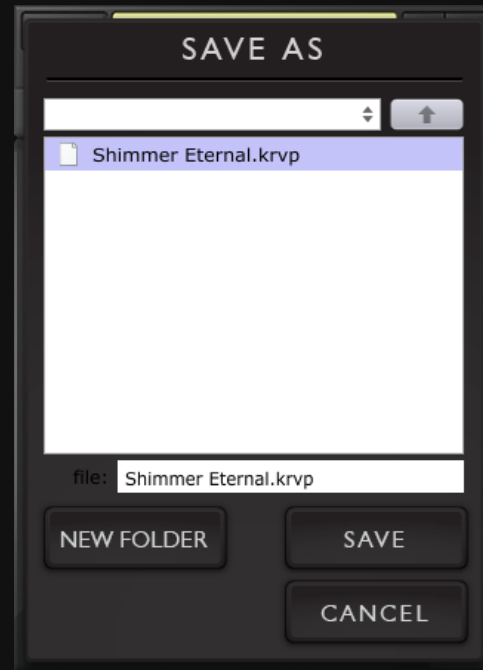
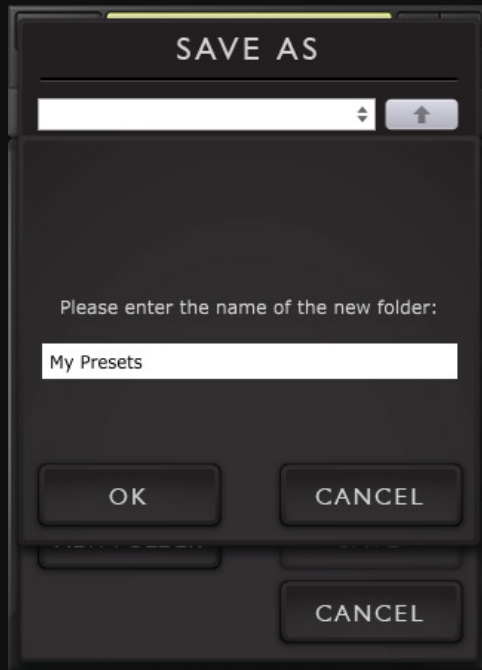
Preset Management



- 3 When you create a new preset using "Save Preset As...", make sure that you have chosen the correct preset folder as aforementioned on point 1 above to make sure that it will be recognized automatically by EFEKTOR plug-ins.



Preset Management



- 4 To add new additional preset banks, create a new folder by clicking “New Folder” button and rename it. Sub-folders are also recognized to manage presets into groups, useful to manage additional preset bank, or grouping presets based by their use.



Function



1 BYPASS

Turns on, off or bypass the rack extension.

2 TYPE SELECTOR

There are multiple fx models emulated within the device, each comes from different era, with different flavor, and character. Pick one which suited your desired sound.

3 STEREO

Switch between mono and stereo operation.

4 REVERB

Sets the amount and length of the reverb effect.

5 TONE

Adjust the tone for the reverb from dark to bright.

6 WET LEVEL

Controls the level of reverberated signal.

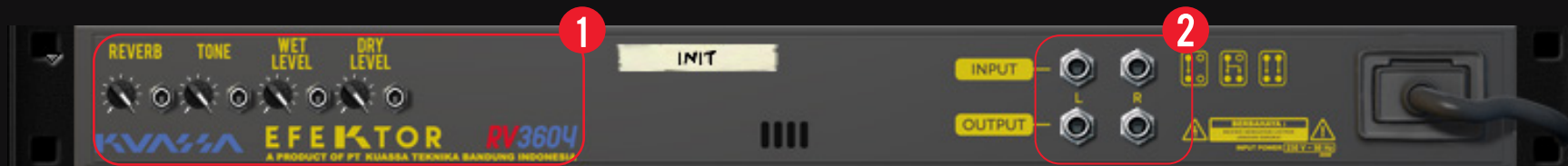
7 DRY LEVEL

Control the level of original signal.

8 ADDITIONAL BYPASS SWITCH

Turns the effect unit completely On or Bypass.

Function



1 CV INPUTS

CV INPUT SOCKET:

Receives incoming CV message for controlling each of EFEKTOR's CV control enabled parameters from another device's CV output.

CV INPUT TRIM:

Turn counter-clockwise for each corresponding input to trim or reduce the intensity of incoming CV message.

2 AUDIO INPUT AND OUTPUT SOCKETS :

Please note that EFEKTOR is an FX, and should always be added as FX device instead of instrument.

MIDI CC PARAMETER LIST (PROPELLERHEAD REASON)

● CC
● PARAMETER NAME



128 = onBypass
129 = reverbType
130 = stereoOn

131 = reverb
132 = tone
133 = wetLevel
134 = dryLevel

Kuassa Efektor Series Created by:

Muhammad Abduh

Intan Zariska Daniyanti

Iman Firman Amarullah

Juan Prahamma Hartjamt

Dimitar Nalbantov

Arie Ardiansyah

Raden Pratama Kusuma

Adhitya Sulistia Wibisana

Bramantyo Ibrahim

Cil Satriawan

Grahadea Kusuf

Iqbal Ansyori

Sundawan Sukmaya

Presets and Audio Demos by:

Dimitar Nalbantov (<http://www.nalbantov.com>)

EFEKTOR RV3604 REVERB

KUASSA TEKNIKA, PT

Jl. Sukasenang V No.14

Bandung 40124

West Java, INDONESIA

<https://www.kuassa.com>

General inquiry: info@kuassa.com

Technical support :
support@kuassa.com



A Product of KUASSA. Bandung, West Java. Indonesia
© 2010-2019 PT Kuassa Teknika

Kuassa and Efektor RV3604 are trademarks of PT Kuassa Teknika, Indonesia.

All other commercial symbols, product and company names are trademarks or registered trademarks of their respective holders.

All rights reserved.