

# EFEKTOR *PH3605* P H A S E R



## **THANK YOU FOR CHOOSING KUASSA PRODUCTS!**

We encourage you to take the time to read this User Manual thoroughly to ensure trouble free and proper operation of the software.

Following the previous Efektor Distortion series, please welcome the newest addition to the Efektor series: Efektor Modulation. We studied and examined more than 20 models of fabled modulation effects from the 1950s to the last decade. From rack gears, desktop units, and effect pedals as well. Modulation effects are widely used by organ/synth players, guitarists, and studio engineers to add width, depth, and movement to the original sound. In this latest bundle, we collect the prominent ones and packed them into four devices.

**FULL NAME, PHASE SHIFTER. TYPICALLY MORE SUBTLE THAN FLANGER, BUT SOUNDS LIKE WARBLES COMING FROM OUTER SPACE. OFTEN USED ON RHODES ELECTRIC PIANO, AND OF COURSE BY GUITARISTS SUCH AS BRIAN MAY (QUEEN) AND EDDIE VAN HALEN (VAN HALEN).**

- Phase One: Mild phasing effect, great for clean tone. Less dramatic sweep.
- Dual Phase: Warm and thick phasing sound that sounds great with distorted guitar tones. Great for many instruments such as guitar, bass, keyboards, and vocals.
- Multi Phase: More intense effect . Offers more than a standard wobbling effect.

**PH3605**  
P H A S E R





## KEY FEATURES:

- Three modes of Modulation in every units.
- Bypass switch button.
- BPM sync.
- Mono or stereo mode.
- CV inputs for automation (RE Only)

## SYSTEM REQUIREMENTS

Windows:

Windows XP or Later (32/64 bit)

Intel Pentium 4, or AMD Athlon XP or better (Core2 Duo, Athlon64, or better is recommended) with 512MB minimum RAM

VST/VST3/AAX/RE compatible host/sequencer or Propellerhead Reason 7.1 or later.

Macintosh:

Mac OSX 10.5 or later (32/64 bit)

Intel Pentium 4, or AMD Athlon XP or better (Core2 Duo or Athlon64 recommended) with 512MB minimum RAM

VST/VST3/AU/AAX/RE compatible host/sequencer, Protools 10 or later or RE Propellerhead Reason 7.1 or later.

# INSTALLATION

## MAC OSX 10.5 OR LATER

Note for MacOS X users: you must be logged in to a user account with administration privileges to run the installer.

For Mac installer(.pkg) format, double-click the installer and follow the instructions. The installer automatically point to your Mac's default VST/VST3/AU/AAX plug-ins path (see below). Alternatively you can customize the installation target to specific folder.

Here is the list of default folder installation path for each of our supported platforms in Mac OSX:

- Mac Audio Unit (EfektorPH3605.component) : Library/Audio/Plug-Ins/Components
- Mac VST (EfektorPH3605.vst) : Library/Audio/Plug-Ins/VST/Kuassa
- Mac VST3 (EfektorPH3605.vst3) : Library/Audio/Plug-Ins/VST3
- Mac AAX (EfektorPH3605.aaxplugin) : Library/Application Support/Avid/Audio/Plug-Ins

## WINDOWS XP OR LATER

Note for Windows Vista, 7, or later: We recommend installation with Administrator rights using "Run as Administrator" for both Kuassa Installer and Sequencer/Host installer.

For Windows Installer (.exe), double-click the installer and follow the instructions. The installer automatically point to your system's default plugins path (see below). Alternatively you can point the installation target to specific folder. Most VST host already have a "Plugins" or "VSTplugins" folder inside its installation directory, or you can point the host to read any folder you choose.

Here is the list of default folder installation path for each of our supported platforms:

- Windows 32-bit VST (EfektorPH3605.dll) : C:\Program Files\Steinberg (x86)\VstPlugins\Kuassa
- Windows 64-bit VST (EfektorPH3605.dll) : C:\Program Files\Steinberg\VstPlugins\Kuassa
- Windows 32-bit VST3 (EfektorPH3605.vst3) : C:\Program Files (x86)\Common Files\VST3
- Windows 64-bit VST3 (EfektorPH3605.vst3) : C:\Program Files\Common Files\VST3
- Windows 32-bit AAX (EfektorPH3605.aaxplugin) : C:\Program Files (x86)\Common Files\Avid\Audio\Plug-Ins
- Windows 64-bit AAX (EfektorPH3605.aaxplugin) : C:\Program Files\Common Files\Avid\Audio\Plug-Ins

# UNINSTALLATION

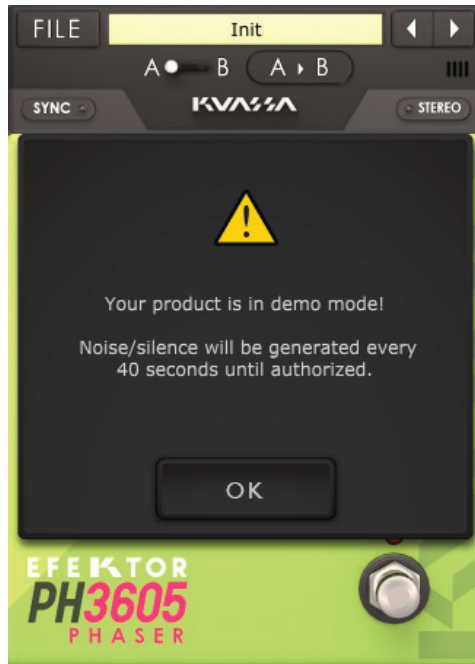
## MAC OSX 10.5 OR LATER

To uninstall from OS X, simply delete the plug-in located on the Plug-ins folder, and delete other file resources located at:  
/Users/[YourName]/Music/Audio Music Apps/Kuassa/\*/\*

## WINDOWS XP OR LATER

Use “Add/Remove programs” or “Programs and Features” from the Windows Control Panel. If EFEKTOR Plug-in(s) does not listed, delete the .dll file from your VST plug-in folder. And other EFEKTOR file resources at ~\Documents\Kuassa\\*\\*

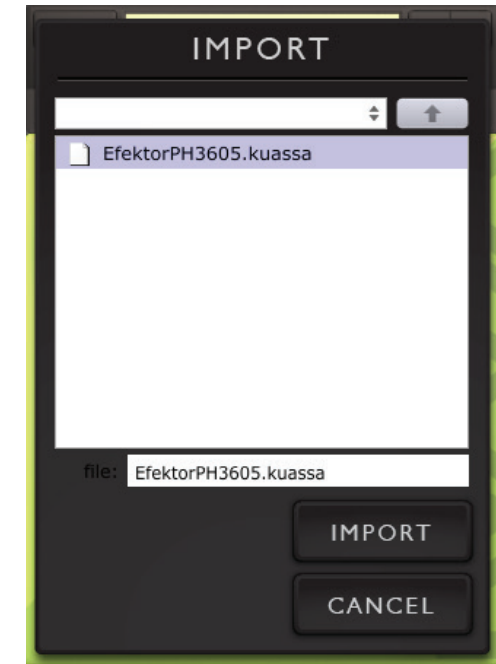
## AUTHORIZATION



**1** On evaluation mode, you will see this pop-up window when you first start the plugin.

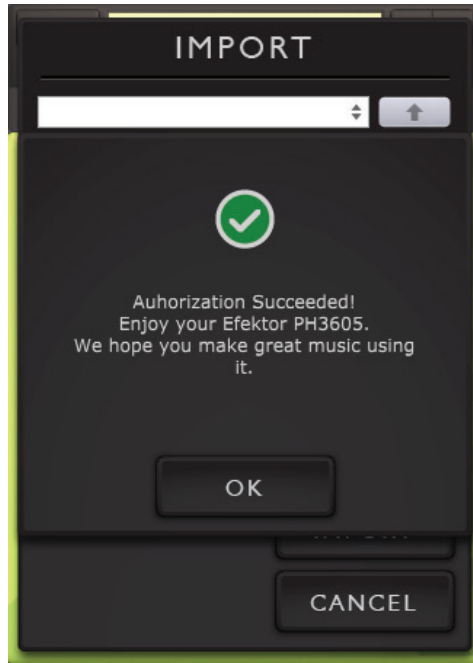


**2** To start the authorization process, click the [File] button on the top-left of the plug-in's interface, there, you will find a selection box titled [Import License].



**3** Locate the License File [EfektorPH3605.kuassa] obtained from the confirmation e-mail sent to you after you purchase EFEKTOR Plug-in(s) from our web store or downloaded from member area. Note that the License File contains your personal information used to authorize the plug-in.

## AUTHORIZATION (CONT'D)



- 4 After you locate the License File, a pop-up box confirming that you are successfully authorize your plug-in will show.



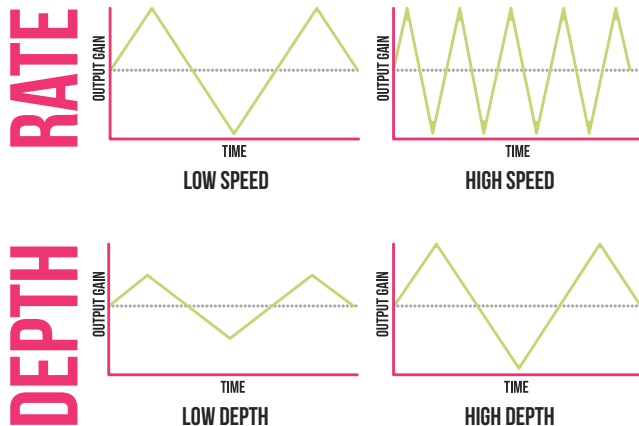
- 5 To check if you have completed the authorization process, just simply load the About Box by clicking the Efektor logo on the bottom left corner. If your authorization is successful, either your name or your e-mail address will be shown on the About Box. You will also notice that the generated noise/silence on the Evaluation Version is now gone.



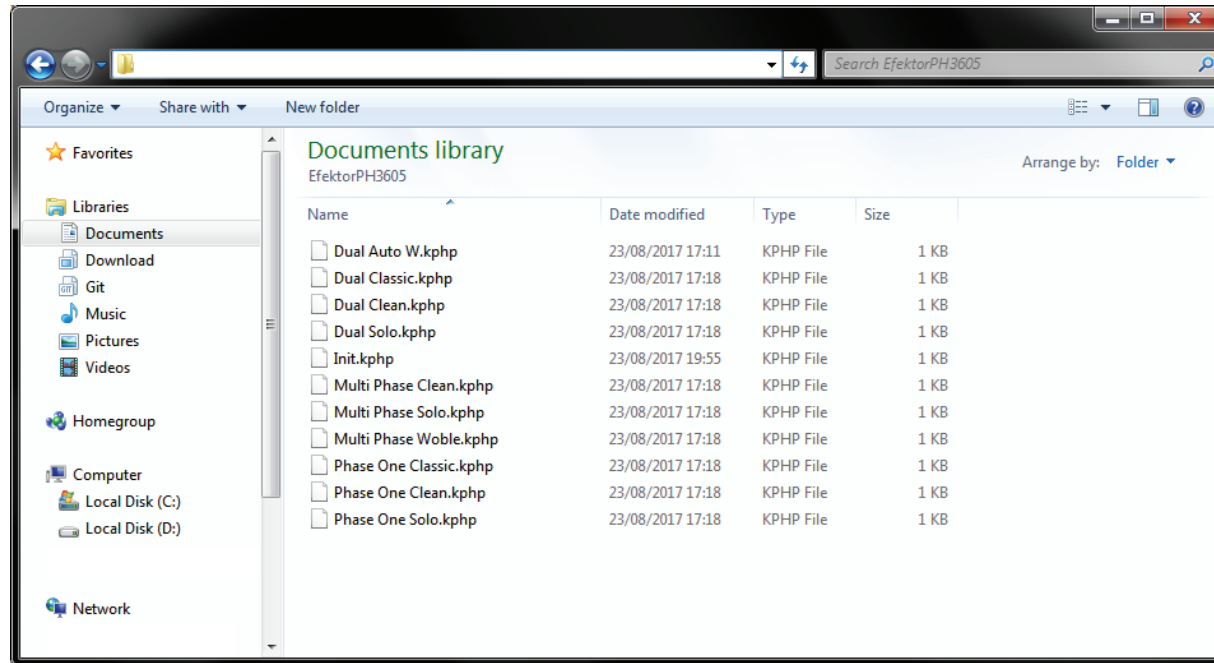
## FUNCTIONS : PH3605



- 1 [FILE] BUTTON: The Menu button contains several functions; preset saving, license file authorization, and shortcuts to the user manual and Kuassa website.
- 2 PRESET SELECTOR: Select from available Presets, press left-right buttons or select from drop down menu.
- 3 SYNC: Enables synchronization of Rate to the host's tempo in BPM.
- 4 A-B COMPARE: Compares two different settings of the plug-in.
- 5 COPY A to B: Copies settings from the "A" state to the "B" state.
- 6 STEREO: Enables or Disables stereo output.
- 7 RATE: Controls the frequency, or the speed of the oscillation. On manual mode, the range is from 0.01 Hz to 20 Hz. When "Sync" is enabled, the range will be from 1 to 1/32T.
- 8 DEPTH: Controls the height, or amplitude of the modulated signal. On minimum settings, the effect will be very subtle, almost inaudible.
- 9 FEEDBACK: Determines the amount of signal that is sent back into the effect.
- 10 MIX: Blends the levels of the "dry" (clean) input signal and the "wet" (processed) signal.
- 11 LEVEL: Controls the overall output level from the plug-ins.
- 12 TYPE SELECTOR: There are multiple fx models emulated within the device, each comes from different era, with different flavor, and character. Pick one which suited your desired sound.
- 13 BYPASS: Turns the effect unit completely On or Bypass.
- 14 EFEKTOR LOGO: Click to show the About Box.



## PRESET MANAGEMENT (1/3)



**1** Presets for EFEKTOR Plug-in(s) are located in the following folders\*:

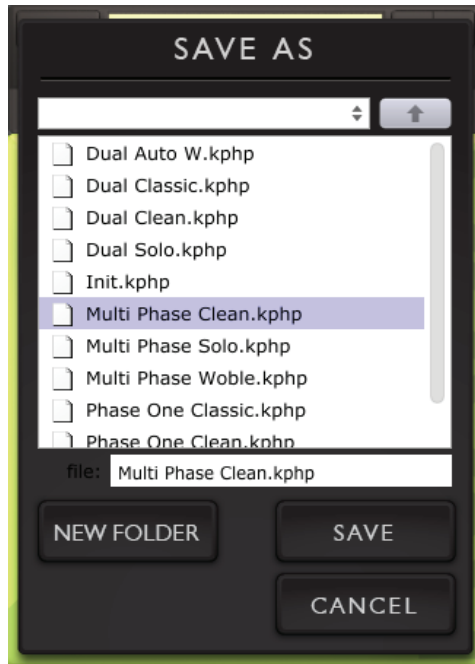
- Mac: Users/[YourName]/Music/Audio Music Apps/Kuassa/Presets/EfektorPH3605
- Win: ~\Documents\Kuassa\Presets\EfektorPH3605

All presets inside these folders will be recognized by the plugin as individual presets, you can also create a folder to group the preset(s). They will thus be shown on the EFEKTOR Plug-in's preset selector.

**2** To save a preset, set your plugin to the desired parameter settings, then select:

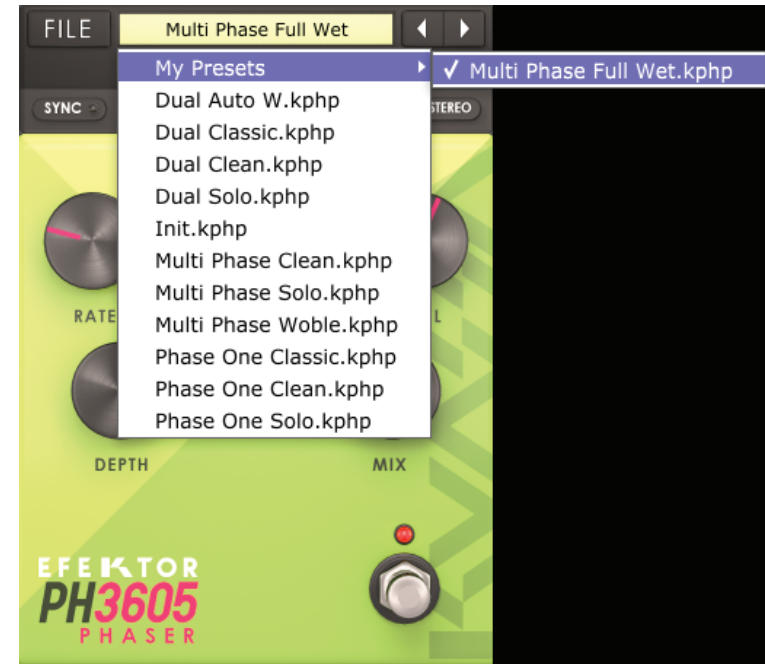
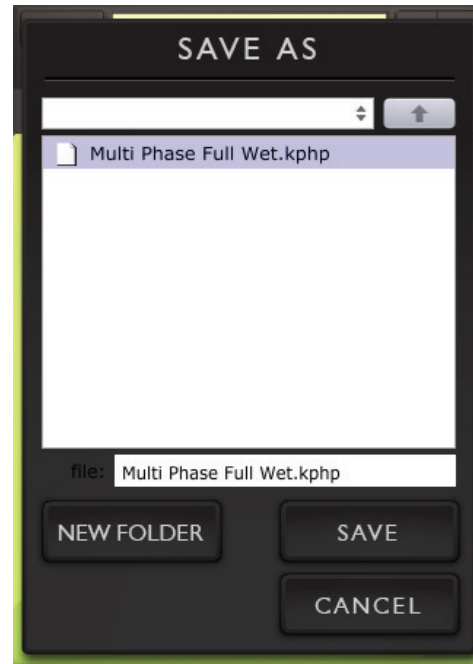
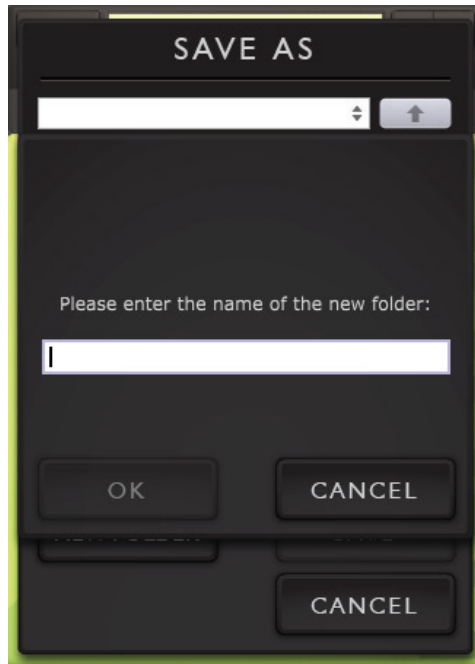
- "Save Preset": Overwrites currently active preset.
- "Save Preset As": Saves current settings into a new preset file (\*.kphp for PH3605).

## PRESET MANAGEMENT (2/3)



- 3 When you create a new preset using "Save Preset As...", make sure that you have chosen the correct preset folder as aforementioned on point 1 above to make sure that it will be recognized automatically by EFEKTOR plug-ins.

## PRESET MANAGEMENT (3/3)



- 4** To add new additional preset banks, create a new folder by clicking “New Folder” button and rename it. Sub-folders are also recognized to manage presets into groups, useful to manage additional preset bank, or grouping presets based by their use.

# EFEKTOR *PH3605* P H A S E R



RACK EXTENSION VERSION

## FUNCTIONS : PH3605



### 1 BYPASS

Turns on, off or bypass the rack extension.

### 2 TYPE SELECTOR

There are multiple fx models emulated within the device, each comes from different era, with different flavor, and character. Pick one which suited your desired sound.

### 3 SYNC & STEREO

SYNC: Enables synchronization of Rate to the host's tempo in BPM.  
STEREO: Enables or Disables stereo output.

### 4 RATE KNOB

Controls the frequency, or the speed of the oscillation. On manual mode, the range is from 0.01 Hz to 20 Hz. When "Sync" is enabled, the range will be from 1 to 1/32T.

### 5 DEPTH KNOB

Controls the height, or amplitude of the modulated signal. On minimum settings, the effect will be very subtle, almost inaudible.

### 6 FEEDBACK KNOB

Determines the amount of signal that is sent back into the effect.

### 7 MIX KNOB

Blends the levels of the "dry" (clean) input signal and the "wet" (processed) signal.

### 8 LEVEL KNOB

Controls the overall output level from the plug-ins.

### 9 ADDITIONAL BYPASS SWITCH

Turns the effect unit completely On or Bypass.



# 1 CV INPUTS

## CV INPUT SOCKET:

Receives incoming CV message for controlling each of EFEKTOR's CV control enabled parameters from another device's CV output.

## CV INPUT TRIM:

Turn counter-clockwise for each corresponding input to trim or reduce the intensity of incoming CV message.

# 2 AUDIO INPUT AND OUTPUT SOCKETS :

Please note that EFEKTOR is an FX, and should always be added as FX device instead of instrument.

## MIDI CC PARAMETER LIST (PROPELLERHEAD REASON)

● CC  
● PARAMETER NAME



- 128 = ON BYPASS SWITCH
- 129 = PHASER TYPE SWITCH
- 130 = SYNC SWITCH
- 131 = STEREO SWITCH
- 132 = RATE KNOB
- 133 = RATE SYNC KNOB
- 134 = DEPTH KNOB
- 135 = FEEDBACK KNOB
- 136 = MIX KNOB
- 137 = LEVEL KNOB

## **KUASSA EFEKTOR SERIES CREATED BY:**

Muhammad Abduh

Intan Zariska Daniyanti

Iman Firman Amarullah

Juan Prahamma Hartjamt

Dimitar Nalbantov

Arie Ardiansyah

Raden Pratama Kusuma

Adhitya Sulistia Wibisana

Bramantyo Ibrahim

Cil Satriawan

Grahadea Kusuf

Iqbal Ansyori

Sundawan Sukmaya

## **PRESETS AND AUDIO DEMOS BY:**

Dimitar Nalbantov (<http://www.nalbantov.com>)



KUASSA TEKNIKA, PT

Jl Sukasenang V No.14

Bandung 40124

West Java, INDONESIA

<http://www.kuassa.com>

General inquiry: [info@kuassa.com](mailto:info@kuassa.com)

Technical support :  
[support@kuassa.com](mailto:support@kuassa.com)



A Product of KUASSA. Bandung, West Java. Indonesia  
© 2010-2017 PT Kuassa Teknika

Kuassa and EfektorPH3605 are trademarks of PT Kuassa Teknika, Indonesia.

All other commercial symbols, product and company names are  
trademarks or registered trademarks of their respective holders.

All rights reserved.